

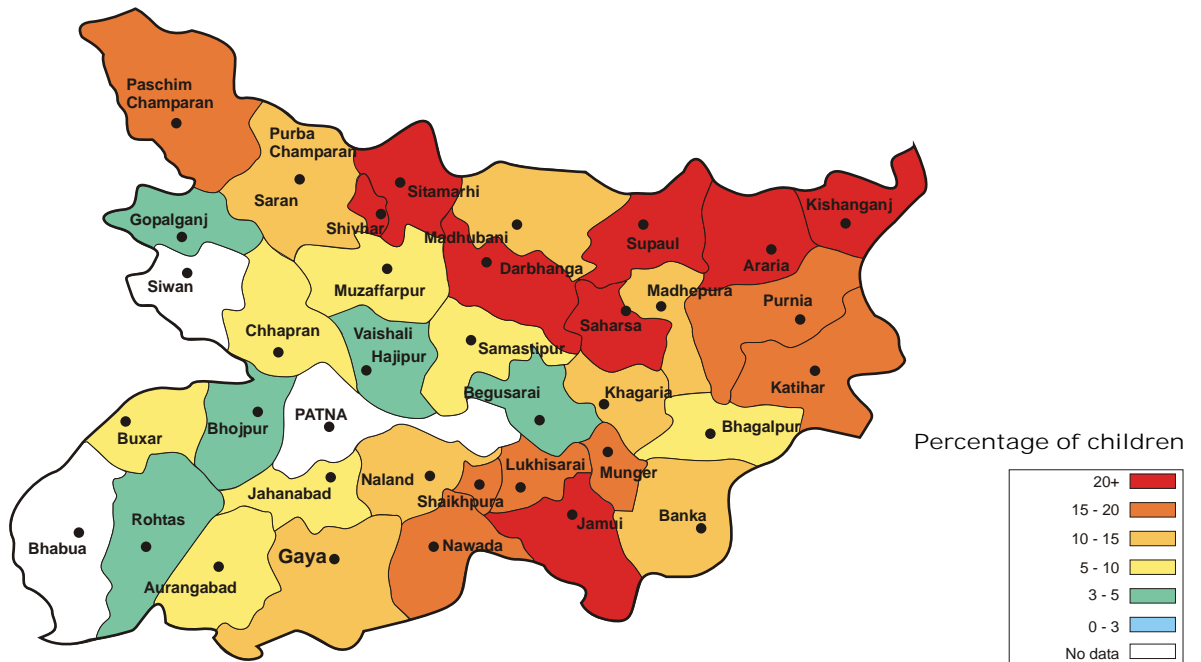
BIHAR RURAL

All analyses based on data from 34 out of 37 districts

Enrollment

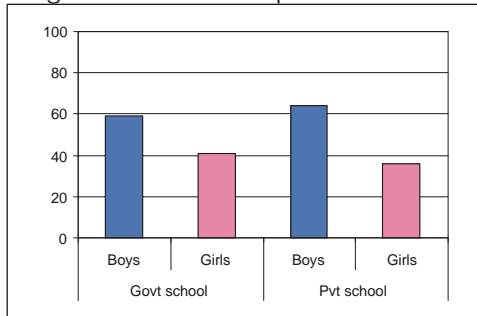
	% Children in different types of schools				% Children not in school		Total
	Government	Private	Madarsa	EGS	Never Enrolled	Drop Out	
Age : 6-14 ALL	72.1	9.1	3.7	1.6	10.3	3.2	100
Age : 6-10 ALL	72.3	9.9	3.8	2.0	10.4	1.5	100
Age : 11-14 ALL	71.9	7.4	3.4	0.7	9.9	6.7	100
Age : 6-10 BOYS	73.6	11.1	3.5	1.9	8.5	1.4	100
Age : 6-10 GIRLS	70.7	8.4	4.2	2.2	13.0	1.6	100
Age : 11-14 BOYS	74.4	8.2	3.1	0.6	7.4	6.3	100
Age : 11-14 GIRLS	68.4	6.2	3.9	0.8	13.4	7.2	100

Out-of-school children

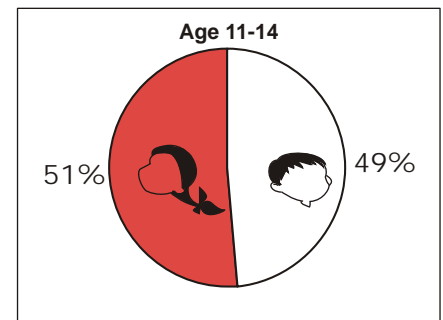
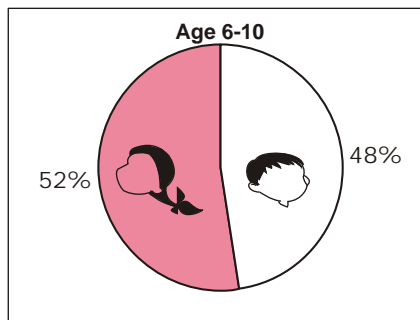


Gender differences

Percentage of boys and girls in government and private schools



Out-of-school children: Proportion of girls and boys.



BIHAR RURAL

Learning

	% Children who CANNOT read ...		% Children who CANNOT solve numerical written sums of ...	
	Level 1*	Level 2**	Subtraction or Division	Division
Age : 7-14 ALL	41.1	55.7	42.1	63.6
Age : 7-10 ALL	52.8	69.2	53.4	76.6
Age : 11-14 ALL	22.3	34.1	24.1	42.7
Govt : Std II-V	39.7	60.4	40.5	69.5
Pvt : Std II-V	19.4	38.3	20.0	49.2
Govt : Std VI-VIII	4.0	13.2	5.6	21.0
Pvt : Std VI-VIII	1.2	8.5	2.5	12.2

* Level - 1: Ability to read a small paragraph with short sentences of std 1 level difficulty.

**Level - 2: Ability to read a 'story' text with some long sentences of std 2 level difficulty.

Subtraction:
2 digit subtraction with borrowing.

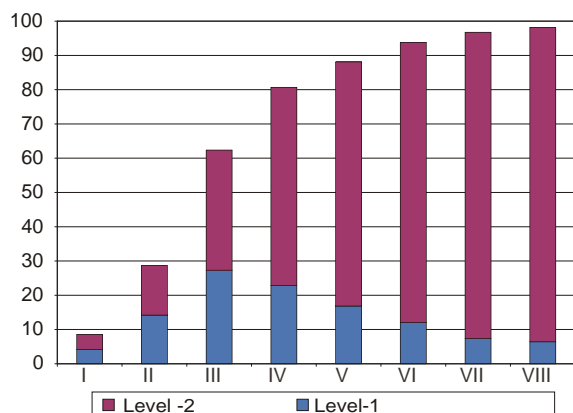
Division:
3 digit divided by 1 digit.

Learning curves

Children who CAN read and solve numerical written sums

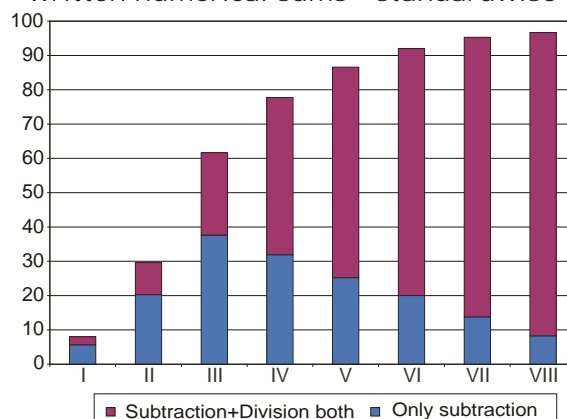
Reading

% All school children who can read-standardwise



Arithmetic

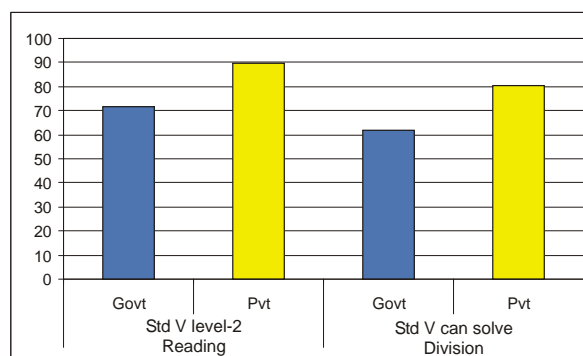
% All school children who can solve written numerical sums - standardwise



Performance of top five and bottom five districts in state based on % all children Std V

Reading	% Std V CANNOT read level-2	Arithmetic	% Std V CANNOT solve division
Top - 5		Top - 5	
Madhepura	7.6	Madhepura	15.2
Aurangabad	11.8	Jehanabad	16.2
Lakhisarai	13.3	Lakhisarai	18.1
Darbhanga	15.6	Aurangabad	21.6
Purba Champaran	16.1	Sheikhpura	22.1
Bottom - 5		Bottom - 5	
Bhojpur	55.8	Bhojpur	59.2
Nalanda	47.8	Vaishali	59.0
Rohtas	45.7	Nalanda	57.1
Saharsa	43.8	Rohtas	52.2
Madhubani	43.4	Gopalganj	51.9

Comparison of government and private schools based on % Std. V children who CAN read level-2 and solve written numerical sums

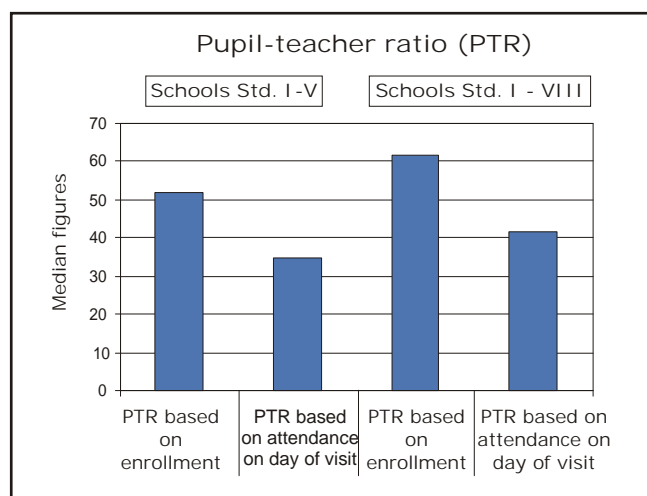


BIHAR RURAL

Teachers, children, and classrooms

Teachers' attendance		
	Schools with:	
	Std. I-IV/V	Std. I - VIII
Total number of schools visited	316	281
% teachers attending (average)	75.4	71.8
% of schools with NO teachers present	6.6	5.3
% of schools with ALL teachers present	42.7	27

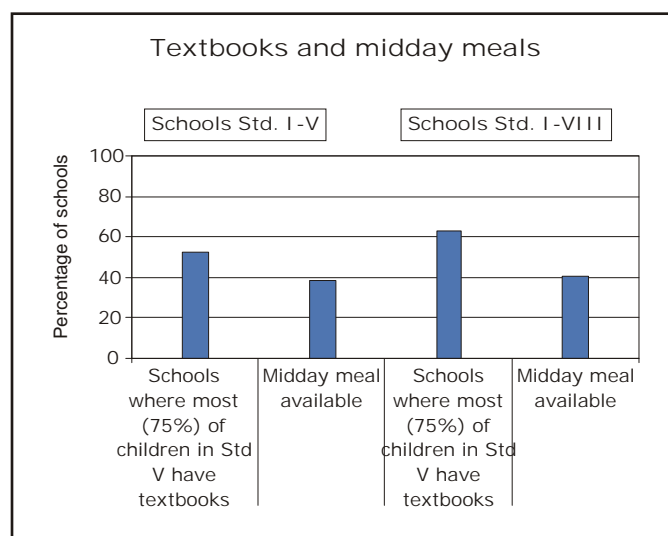
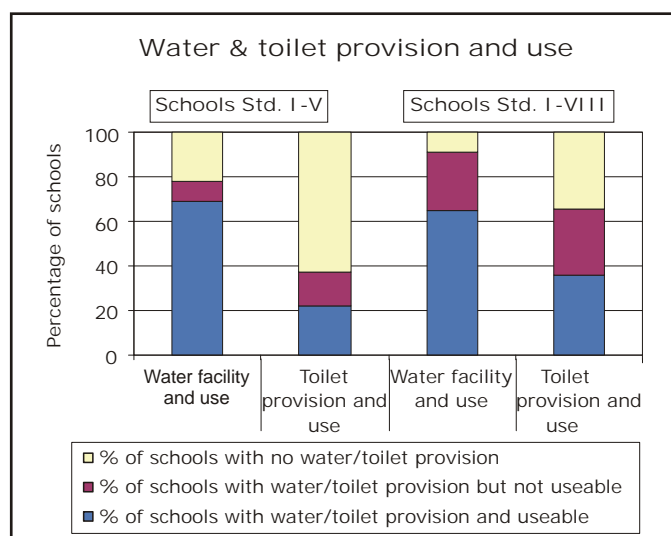
Children's attendance		
	Schools with:	
	Std. I-IV/V	Std. I - VIII
Total number of schools visited	315	281
% enrolled children attending (average)	51.8	50.3
% of schools with less than 50% of enrolled children attending	40.0	45.2



Average number of rooms available

Type of school by enrollment	% Schools visited	Std I-V rooms	Type of school by enrollment	% Schools visited	Std I-VIII rooms
<=50	1	2.5	<=150	1	3.0
51-75	1	1.5	151-250	18	4.8
76-150	20	2.3	251-350	17	4.9
151-225	31	2.7	351-450	18	5.3
>225	47	3.2	>450	46	6.9

Provision and use



Performance of all districts

District	All Children	Std V children		District	All Children	Std V children	
	% Out-of-school	% CAN read level - 2	% CAN solve division and subtraction		% Out-of-school	% CAN read level - 2	% CAN solve division and subtraction
Araria	23.0	73.5	58.8	Madhubani	12.8	56.6	59.0
Aurangabad	9.3	88.2	78.4	Munger	18.6	68.2	64.7
Banka	10.4	73.5	57.1	Muzaffarpur	5.8	72.5	66.4
Begusarai	4.3	78.9	74.3	Nalanda	11.9	52.2	42.9
Bhagalpur	5.4	75.0	64.8	Nawada	18.5	81.1	75.3
Bhojpur	3.3	44.2	40.8	PashchimChampar	17.3	72.3	55.4
Buxar	5.1	68.2	64.2	PurbaChamparan	12.3	84.0	63.0
Darbhanga	22.8	84.4	49.2	Purnia	15.9	71.0	64.5
Gaya	11.7	69.2	53.2	Rohtas	4.2	54.4	47.8
Gopalganj	4.5	60.3	48.2	Saharsa	26.1	56.3	54.7
Jamui	22.4	72.2	60.3	Samastipur	9.6	76.5	70.6
Jehanabad	9.1	82.2	83.8	Saran	9.4	70.2	66.4
Katihar	18.9	75.0	70.3	Sheikhpura	12.0	79.2	77.9
Khagaria	12.0	71.0	76.3	Sheohar	25.1	61.5	51.3
Kishanganj	23.3	63.6	59.7	Sitamarhi	25.2	70.0	56.7
Lakhisarai	16.7	86.8	81.9	Supaul	28.6	77.0	68.9
Madhepura	11.5	92.4	84.8	Vaishali	4.6	63.2	41.1
				Bihar State	13.5	71.3	61.4

Reading Test:
Sample 3

कहानी

एक दिन बकरी, चील और मेंढक ने आकाश में उड़ने की सोची। चील एक बड़ा सा गुब्बारा ले आई। बकरी एक डोरी और मेंढक एक टोकरी ले आया। तीनों ने मिलकर उसकी उड़न टोकरी बनाई। तीनों उसमें बैठकर उड़ने लगे। अचानक बकरी के सींग से गुब्बारा फट गया। सभी जमीन पर आ गिरे।

अनुच्छेद

बाजार में सुनार की दुकान है। सुनार जेवर बनाता है। जेवर चाँदी और सभी जेवर पहनते हैं।

आज ज... साथ में ए... वह छड़ी क... जादू क...



कहानी

एक दिन कनक को खेलते-खेलते छोटी सी गिलहरी मिली। कनक उसे अपने घर ले आया। कनक परेशान था कि इतनी छोटी गिलहरी को क्या खिलाया जाए? तभी उसे दूध की बोतल दिखाई दी। उसने बोतल में दूध भरकर गिलहरी को पिलाया। अब छोटी गिलहरी दूध पीकर खुशी से कुट-कुट करती है।

Reading Test:
Sample 4

ASER 2005

अनुच्छेद

हम सभी मसूरी घूमने गए। वहाँ हमने पानी का झरना देखा। झरना बहुत ऊँचा था। वहाँ हम सबने फोटो भी खींची।

अनुच्छेद

रामलीला के दिन आए हैं। राम-रावण की लड़ाई होगी। बुराई की हार और भलाई की जीत होगी।